



MAPAGILE™

Geospatial applications have become increasingly important tools to help organizations integrate resources, track assets and assist in decision making processes. And while these applications provide the power to visualize information, they can be daunting to learn and difficult to navigate for the casual user. MapAgile allows you to view all of your utility maps in an easy-to-use single application providing greater flexibility for navigation and query of displayed data. MapAgile is easy to install and many of the tools are configurable by the user.

The MapAgile tools include:

Selectors: configurable, pre-defined indices that allow you to quickly display and highlight individual facilities such as poles, valves, addresses or street intersections. Selectors can be configured at either at installation or when your data would support the addition of another selector index.

Zoom tool: Allows zooming in or out by drawing a box or by just clicking a point in the current view. The center of the current view is preserved during the zoom process.

Magnify tool: Creates a window under which the area of the map appears enlarged. Use your mouse to move the magnifier and view the area continuously with no need to refresh the window. The size of the magnifier window and the amount of magnification is customizable.

Ping: Draws and erases a bull's-eye pattern at the currently highlighted feature. If more than one feature highlighted, it will draw the bull's-eye at the geometric center of the features. If the feature is off the screen, Ping will point in the direction of the feature and give a distance.

Show in Grid: Displays database entries for currently selected features in a tabbed grid. Users can toggle which fields are displayed between 'visible', which only displays the layers marked as visible or all the fields regardless of visibility settings.

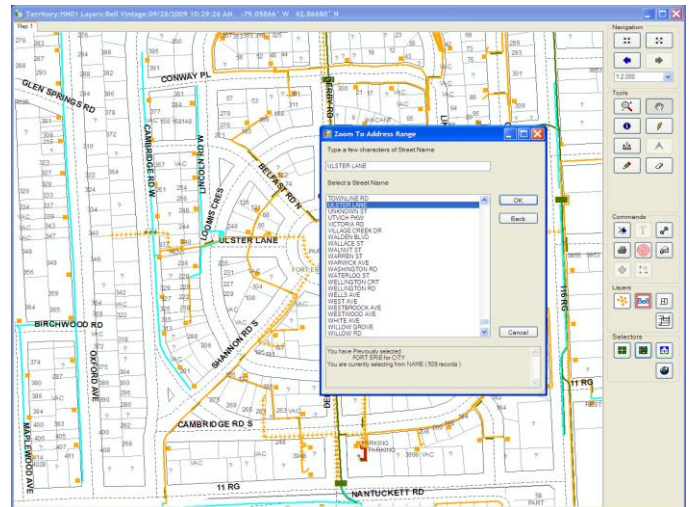
Bookmark/Annotation Group/One Click Group Organizer: Organize your bookmarks and annotation groups in a folder structure. Create folders and sub folders as needed to easily access large numbers of items. Add buttons for specific Bookmarks or One Click Groups directly to any toolbar.

Select by Polygon: Selects and highlights all features within a user-defined, polygonal area.

One Click Groups: Allow users to define and save display settings for visual clarity and to optimize job specific tasks.

GPS: GPS support is provided for ArcReader-based viewers. Show current or relative position.

Locate Ticket Manager: Provides a tabular and geographic display of locate tickets, color coded by due date. Sort and filter by date and status. Mark locates as completed. Zoom to specific tickets.



MapAgile's selector tool lets you immediately zoom to your area of interest.

© 2010 NMT Corporation. All Rights Reserved. All other trademarks or registered trademarks are the property of their respective owners.